

# OMERO – General informations

## omero-imaging.uni-muenster.de

### **Login:**

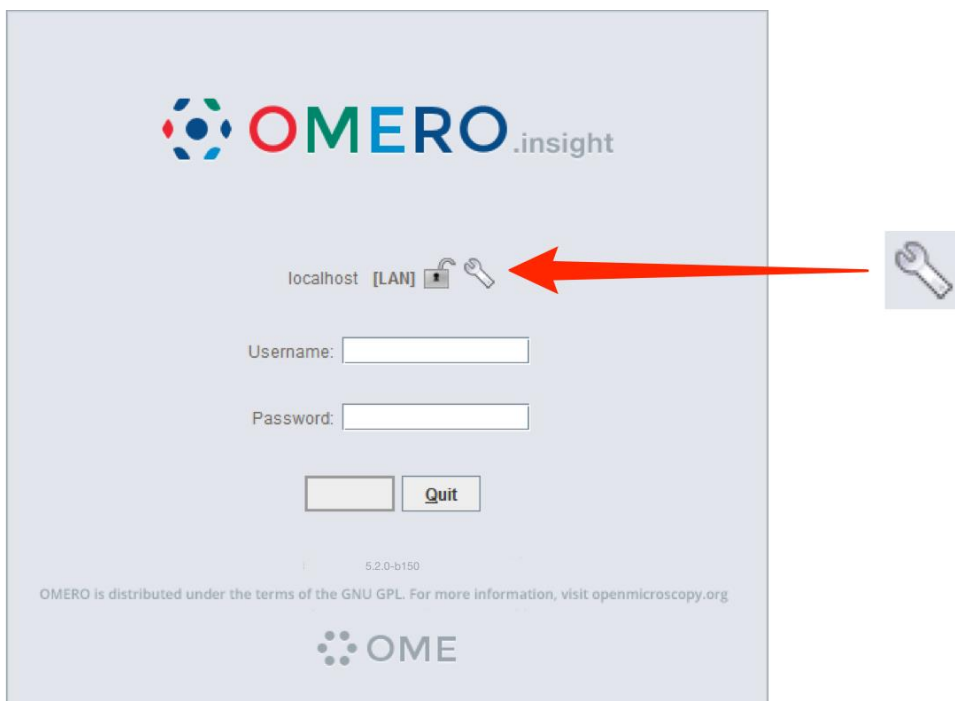
Open your browser and go to [omero-imaging.uni-muenster.de](http://omero-imaging.uni-muenster.de). Please login with your university-ID and university password. After login you are member of a Demo group. To change your group please write an e-mail with the name of your group to [Thomas.Zobel@uni-muenster.de](mailto:Thomas.Zobel@uni-muenster.de). If the login via your university-ID is not working, please contact Dr. Thomas Zobel.

### **OMERO.insight client:**

To upload your data to OMERO, you will need the client OMERO.insight in a specific version matching the actual running server version.

**The actual needed OMERO.insight versions can be downloaded from the website of the Imaging Network.**

1: When you first start OMERO.insight, please click on the **wrench** icon:



# OMERO – General informations

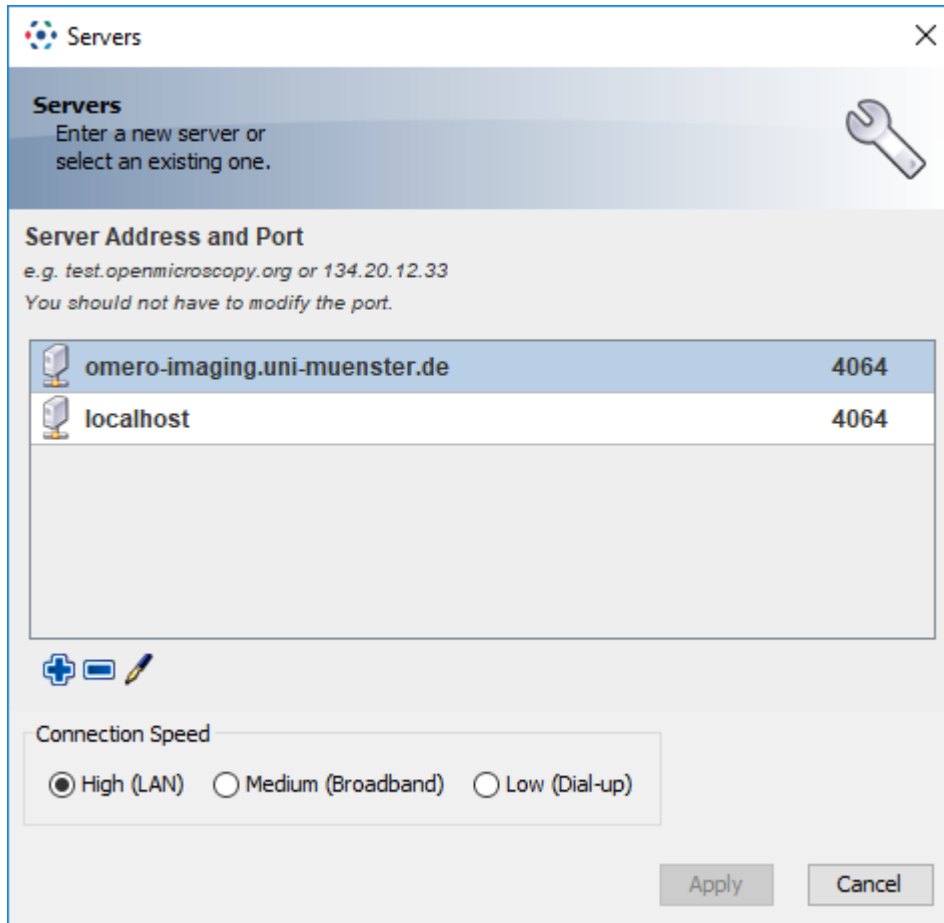
## omero-imaging.uni-muenster.de

2: Add the following server address and port using the + symbol

**Server address:** omero-imaging.uni-muenster.de

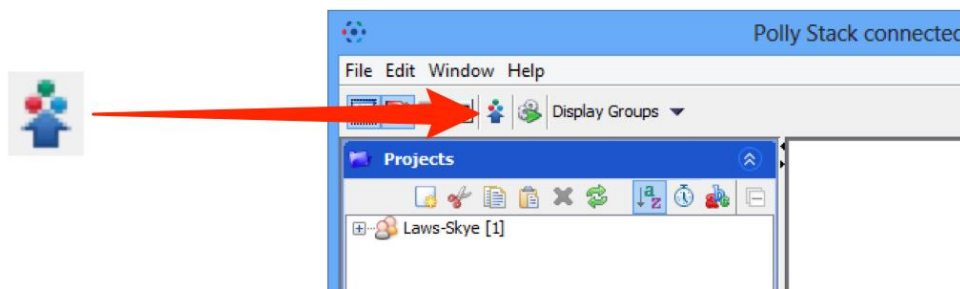
**Port:** 4064

If necessary, delete “localhost” by using the - symbol.



3. Press OK and login with you provided username and password or with your university-ID and university password.

4. To upload image data use click on the **Importer** Icon and choose your files.



5. In the next window you can choose the **Project** and **Dataset** folder and add **Tags** (options menu).

For detailed introductions how to use OMERO please visit:

<https://help.openmicroscopy.org/index.html>

# OMERO – General informations

## omero-imaging.uni-muenster.de

How to upload image data?

<https://help.openmicroscopy.org/getting-started-5.html#adding-data>

### **OMERO.insight ImageJ plugin:**

You can also start OMERO.insight as an plugin in Fiji / ImageJ. This allows you to directly open your images in Fiji / ImageJ.

Download: Please download the actual needed version of the Fiji plugin from the website of the Imaging Network ([click](#))

Introductions: <https://help.openmicroscopy.org/imagej.html>